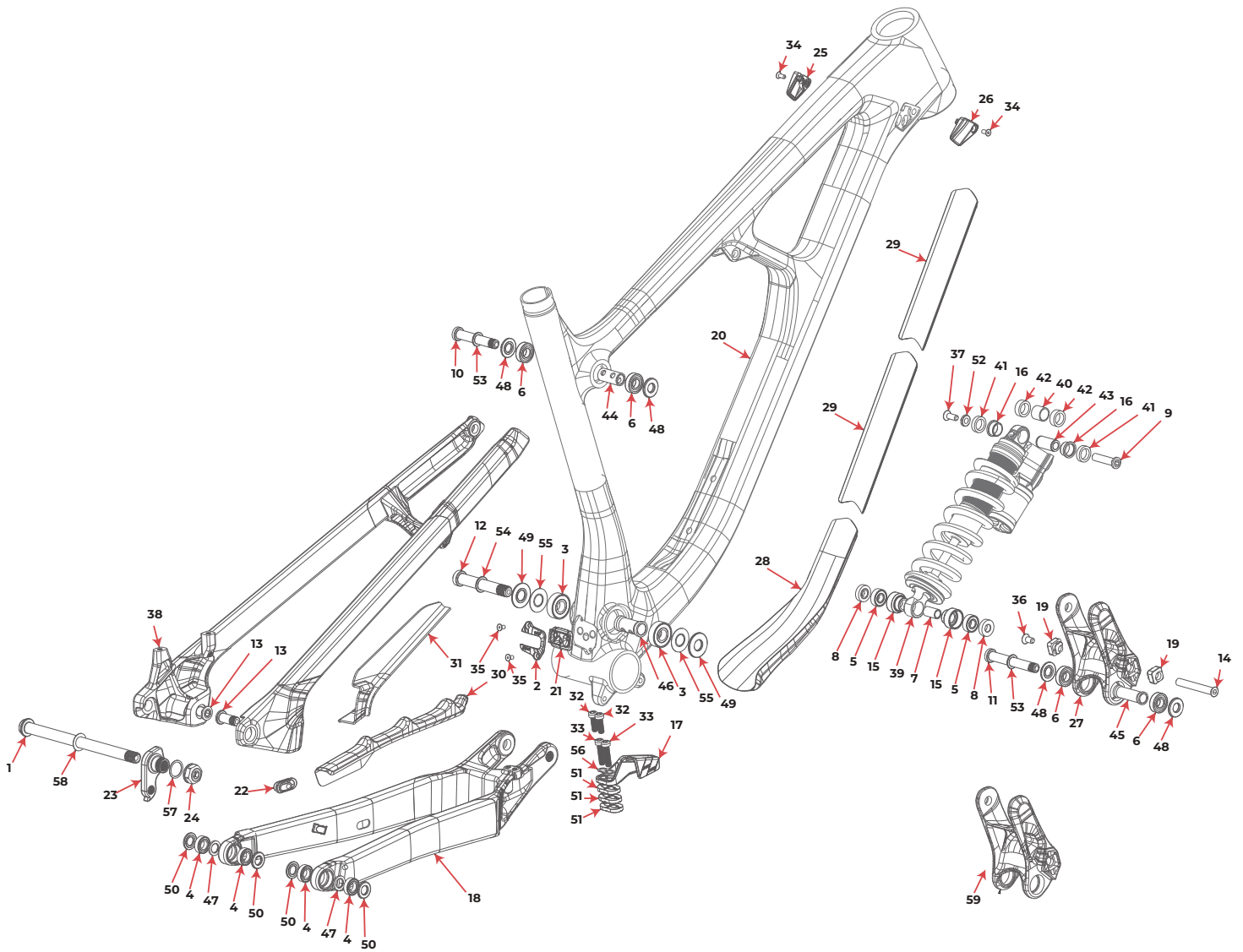


MY22 MY21 MY20

Slayer Carbon



2020 SLAYER 27_29 ALLOY

EVP/PV

#	QTY	ITEM	PART NO.	REVISION	DESCRIPTION
1810015 LINK WITH BEARING KIT SLAYER 27 2020					
27	1	LINK	1090020	C	2020 SLAYER 27 LINK
6	2	BEARING	1807042	NIL	ENDURO 6900 2RS MAX, 22X10X6
1810016 LINK WITH BEARING KIT SLAYER 29 2020					
59	1	LINK	1090021		2020 SLAYER 29 LINK
6	2	BEARING	1807042	NIL	ENDURO 6900 2RS MAX, 22X10X6
1818013 KIT STANDARD HANGER					
23	1	HANGER	1099031	A	REAR DER. HANGER, EXT THREAD, STD MOUNT
24	1	HANGER NUT	1099033	NIL	HANGER NUT, M16X1, 8MM HEX
57	1	WASHER	1808029	NIL	WASHER, 16x20x0.5MM, 304 SS
1810017 PIVOT BOLT KIT SLAYER 2020					
9	1	BOLT	1800006	NIL	SLAYER SHOCK BOLT, FORWARD, OD:8, L:33, 5MM HEX
52	1	WASHER	1800007	NIL	SLAYER SHOCK SCREW WASHER, M6 C'SINK
37	1	SCREW, M6X16	1807120-BK	NIL	FLAT HEAD C'SUNK SOCKET SCREW, M6-1.0 X 16mm, Stainless, Black, BLUE LOCTITE
11	1	BOLT	1800012	NIL	SLAYER LINK BOLT, LOWER, M10X1.0, L:71, 6MM HEX
53	2	WASHER	1800019	NIL	WASHER ID: 10.2, OD: 15.5, T: 1
48	4	SPACER	1800009	NIL	LINK BEARING SPACER, OD:22, ID:10, T:2.5
14	1	BOLT	1807049	C	CSUNK BOLT, 8MM X 57MM X M6 INT.
36	1	SCREW, M6x12	180566-012-E	NIL	FLAT HEAD C'SUNK SOCKET SCREW, M6-1.0 X 12mm, Stainless black
12	1	BOLT	1800013	NIL	SLAYER MP BOLT, M12X1.0, L:73, 6MM HEX
54	1	WASHER	1800020	NIL	WASHER ID: 12.2, OD: 17.5, T: 1
49	2	SPACER	1800015	NIL	MP BEARING SPACER, OD:28, ID:12, T:2
55	2	WASHER	1800023	NIL	ENDURO WASHER SEAL FOR 12X28 BEARING
10	1	BOLT	1800011	NIL	SLAYER LINK BOLT, UPPER, M10X1.0, L:59, 6MM HEX
13	2	BOLT	1800016	NIL	SLAYER DROPOUT BOLT, M10X1.0, L:24, 6MM HEX
44	1	SLEEVE	1800008	NIL	SLAYER TT BEARING SLEEVE, ID:10, OD:14, L:29
45	1	SLEEVE	1800010	NIL	SLAYER SS BEARING SLEEVE, ID:10, OD:14, L:41, NECKED
46	1	SLEEVE	1800014	NIL	SLAYER MP BEARING SLEEVE, OD:17, ID:12, L:35
47	2	SLEEVE	1800017	NIL	SLAYER DO BEARING SLEEVE, OD:16, ID:10, T:1.8
50	4	SPACER	1800018	NIL	DO BEARING SPACER, OD:19, ID:10, T:2
1810018 SPIRIT GUIDE KIT SLAYER 2020					
17	1	CHAIN GUIDE	3398001	A	CHAIN GUIDE
32	2	SCREW	1800029	NIL	M6-1.0, 18MM LONG, SOCKET HEAD
33	2	SCREW	1807132	NIL	M6-1.0, 25MM LONG, SOCKET HEAD
51	3	SPACER	3398002	A	CHAIN GUIDE SPACER
56	1	WASHER	1807133	NIL	CHAIN GUIDE WASHER
1810019 BIKE PROTECTION KIT SLAYER 2020					
29	2	PROTECTOR	370002	NIL	TAILGATE PROTECTOR
28	1	PROTECTOR	370001	NIL	DOWNTUBE PROTECTOR
30	1	PROTECTOR	370003	NIL	CHAINSTAY PROTECTOR
31	1	PROTECTOR	370004	NIL	SEATSTAY PROTECTOR
1810020 CHAINSTAY PROTECTOR 2020					
30	1	PROTECTOR	370003	NIL	CHAINSTAY PROTECTOR
1817011 AXLE KIT BOOST					
1	1	AXLE, REAR	3227009	C	REAR AXLE 12X 173MM, HARD BLACK ANO
58	1	WASHER	3227006	B	WASHER, 12x19x0.5MM, 304 SS
1818003 SHOCK BEARING EYELET KIT					
5	2	BEARING	1807036	NIL	ENDURO 698 LLU MAX 19X8X6
7	1	BEARING SLEEVE	1807028	A	BEARING EYELET SLEEVE FOR SR 19X8X6 CUP
8	2	BEARING SPACER	1807099	C	EYELET BEARING SPACER, 5.3MM THK, FOR 40MM LINK WIDTH
15	2	BRG CUP	1807026	E	BEARING EYELET FOR SR 19X8X6 BRG
1810021 PIVOT BEARING KIT SLAYER 2020					
3	2	BEARING	1800021	NIL	ENDURO 6001 LLU MAX 28X12X8
4	4	BEARING	1800022	NIL	ENDURO 6800 LLU MAX 19X10X5
6	4	BEARING	1807042	NIL	ENDURO 6900 2RS MAX, 22X10X6
1810022 HEAD TUBE PANEL KIT 2020					
25	1	HT PORT COVER, LEFT	1800004	A	HT PLASTIC PORT COVER, M4, LEFT
26	1	HT PORT COVER, RIGHT	1800003	A	HT PLASTIC PORT COVER, M4, RIGHT
34	2	SCREW, M4X10	1800024-BK	NIL	C'SUNK SOCKET SCREW, M4x10mm, zinc plated 10.9 steel black
1810023 BB CABLE PORT KIT 2020					
2	1	BB PORT COVER	1800001	NIL	SLAYER BB PLASTIC PORT COVER
21	1	GROMMET	1800002	NIL	SLAYER BB PORT GROMMET, 85A
35	2	SCREW, M4X8	1807068-BK	NIL	FLAT HEAD C'SUNK SOCKET SCREW, M4 X 8mm, STAINLESS STEEL, BLACK
22	1	GROMMET	1809006	NIL	RUBBER GROMMET FOR 1 CABLE 5mm YF-W13-5
1810024 RIDE 4 FLIP CHIP KIT 2020					
19	2	FLIP CHIP	180628	NIL	FLIP CHIP, AL7075, BLACK ANODIZE

Sold as a kit only. Individual part not sold separately