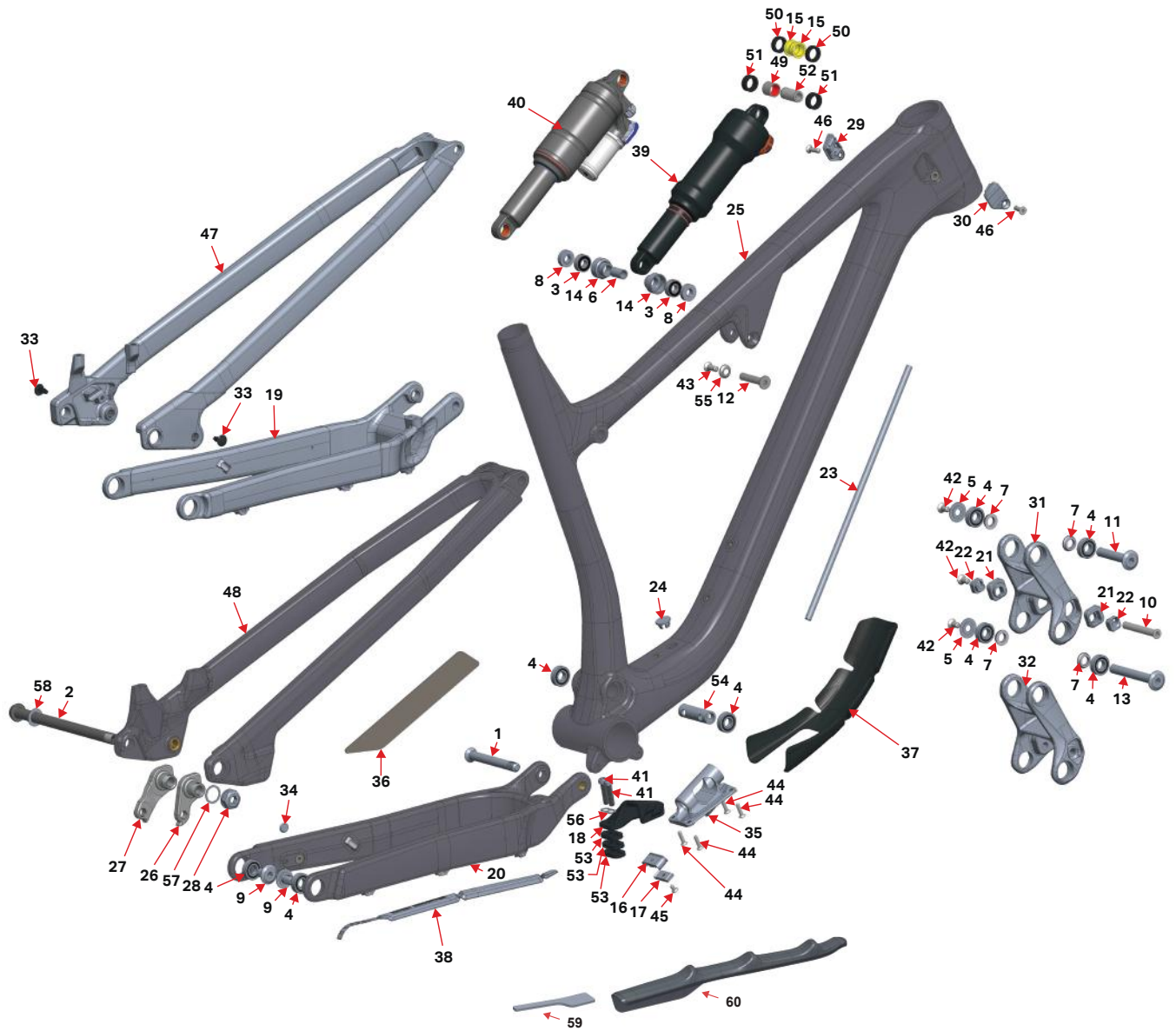


MY20 MY19 MY18

Instinct Carbon



2019 INSTINCT CARBON REV F

#	QTY	ITEM	PART NO.	REVISION	DESCRIPTION
1819015 INSTINCT LINK WITH BEARING KIT					
31	1	LINK	1098101	A	INSTINCT LINK, 88MM LONG, RIDE9, AL7075-T6, HARD BLACK ANO
4	4	BEARING	1807042	NIL	ENDURO BEARING 6900 2RS MAX TYPE, 22X10X6 SIZE
1819016 INSTINCT BC LINK WITH BEARING KIT					
32	1	LINK	1098102	A	INSTINCT BC LINK, 88MM LONG, AL7075-T6, HARD BLACK ANO
4	4	BEARING	1807042	NIL	ENDURO BEARING 6900 2RS MAX TYPE, 22X10X6 SIZE
1818012 HANGER KIT SHIMANO DIRECT MOUNT					
27	1	HANGER	1099041	NIL	REAR DER. HANGER, EXT THREAD, SHIMANO DIRECT MOUNT
28	1	HANGER NUT	1099033	NIL	HANGER NUT, M16X1, 8MM HEX
57	1	WASHER	1808029	NIL	WASHER, 16x20x0.5MM, 304 SS
1818013 KIT STANDARD HANGER					
26	1	HANGER	1099031	A	REAR DER. HANGER, EXT THREAD, STD MOUNT
28	1	HANGER NUT	1099033	NIL	HANGER NUT, M16X1, 8MM HEX
57	1	WASHER	1808029	NIL	WASHER, 16x20x0.5MM, 304 SS
1810005 PIVOT BOLT KIT					
1	1	AXLE, MP	1807029	A	MP AXLE, M10X1.25, L:84Mm, AL7075-T6 HARD BLACK ANO
5	2	BEARING CAP	1807043	NIL	6900 BEARING CAP, AL 7075 T-6, HARD BLACK ANO
7	4	BEARING SPACER	1807044	NIL	6900 BEARING SPACER
9	2	BOLT	1807046	NIL	BOLT, 10MM X 15MM, M10X1 EXT., AL 7075 T-6 HARD BLACK ANO
10	1	BOLT	1807049	C	CSUNK BOLT, 8MM X 57MM X M6 INT.
11	1	BOLT	1807060	NIL	BOLT, 10MM X 54MM, M6X1 INT., AL 7075-T6, HARD BLACK ANO
13	1	BOLT, M10X78	1807061	NIL	BOLT, 10MM X 78MM, M6X1 INT., AL 7075 T-6, HARD BLACK ANO
42	3	SCREW M6x12	180566-012	NIL	FLAT HEAD C'SUNK SOCKET SCREW, M6-1.0 X 12mm, A4/316 SS, 55060.060.012
55	1	WASHER	1807064	NIL	C'SUNK WASHER: (for M6 screw) ID:6 x OD:14.6 x 3.25mm THK.
43	1	SCREW M6x16	180566-016	NIL	FLAT HEAD C'SUNK SOCKET SCREW, M6-1.0 X 16mm, A4/316 STAINLESS STEEL
12	1	BOLT SHK.	1807062	G	SHOCK BOLT, SOLID, OD:8MM, L: 41MM
54	1	SPACER, MP	1807038	B	MAIN PIVOT CENTER SPACER, ID:10, L:48
1398002 SPIRIT GUIDE KIT					
18	1	CHAIN GUIDE	3398001	A	CHAIN GUIDE
41	2	SCREW	1807132	NIL	M6-1.0, 25MM LONG, SOCKET HEAD
56	1	WASHER	1807133	NIL	CHAIN GUIDE WASHER
53	3	SPACER	3398002	A	CHAIN GUIDE SPACER
3708023 BIKE PROTECTION KIT A					
36	1	PROTECTOR	3708008	D	SEATSTAY PROTECTOR
37	1	PROTECTOR	3708022	NIL	MULTIBIKE DOWNTUBE PROTECTOR
38	1	PROTECTOR	3708035	NIL	MULTIBIKE CHAINSTAY PROTECTOR
1817011 AXLE KIT BOOST					
2	1	AXLE, REAR	3227009	C	REAR AXLE 12X 173MM, HARD BLACK ANO
58	1	WASHER	3227006	B	WASHER, 12x19x0.5MM, 304 SS
1818003 SHOCK BEARING EYELET KIT					
3	2	BEARING	1807036	NIL	ENDURO 698 11U MAX 19X8X6
6	1	BEARING SLEEVE	1807028	A	BEARING EYELET SLEEVE FOR SR 19X8X6 CUP
8	2	BEARING SPACER	1807099	C	EYELET BEARING SPACER, 5.3MM THK, FOR 40MM LINK WIDTH
14	2	BRG CUP	1807026	E	BEARING EYELET FOR SR 19X8X6 BRG
1817017 PIVOT BEARING KIT					
4	8	BEARING	1807042	NIL	ENDURO BEARING 6900 2RS MAX TYPE, 22X10X6 SIZE
1817023 HEAD TUBE PANEL KIT					
29	1	HT PANEL LEFT	1097136	C	HT PORT PANEL, LEFT
30	1	HT PANEL RIGHT	1097140	C	HT PORT PANEL, RIGHT
46	2	SCREW, M5X16	1806009	NIL	FLAT HEAD C'SUNK SOCKET SCREW, M5-0.8 X 16mm, ALUMINIUM
1810008 DOWN TUBE PORT COVER KIT					
35	1	PORT COVER	1805056	B	SHIM. D12 PORT COVER PLATE, PLASTIC
16	1	CABLE PORT	1807066	A	CABLE PORT, 2-PIECE, BOTTOM HALF
17	1	CABLE PORT	1807067	A	CABLE PORT, 2-PIECE, TOP HALF
44	4	SCREW, M4X16	1805077	NIL	C'SUNK SOCKET SCREW, M4x16mm, zinc plated 10.9 steel
45	1	SCREW, M4X8	1807068	NIL	C'SUNK SOCKET SCREW, M4x8mm, zinc plated 10.9 steel
1810009 RIDE 9 FLIP CHIP KIT					
21	2	FLIP CHIP	1807003	NIL	FLIP CHIP, OUTSIDE, AL7075, BLACK ANODIZE.
22	2	FLIP CHIP	1807004	A	FLIP CHIP, INSIDE, AL7075, BLACK ANODIZE.

Sold as a kit only. Individual part not sold separately