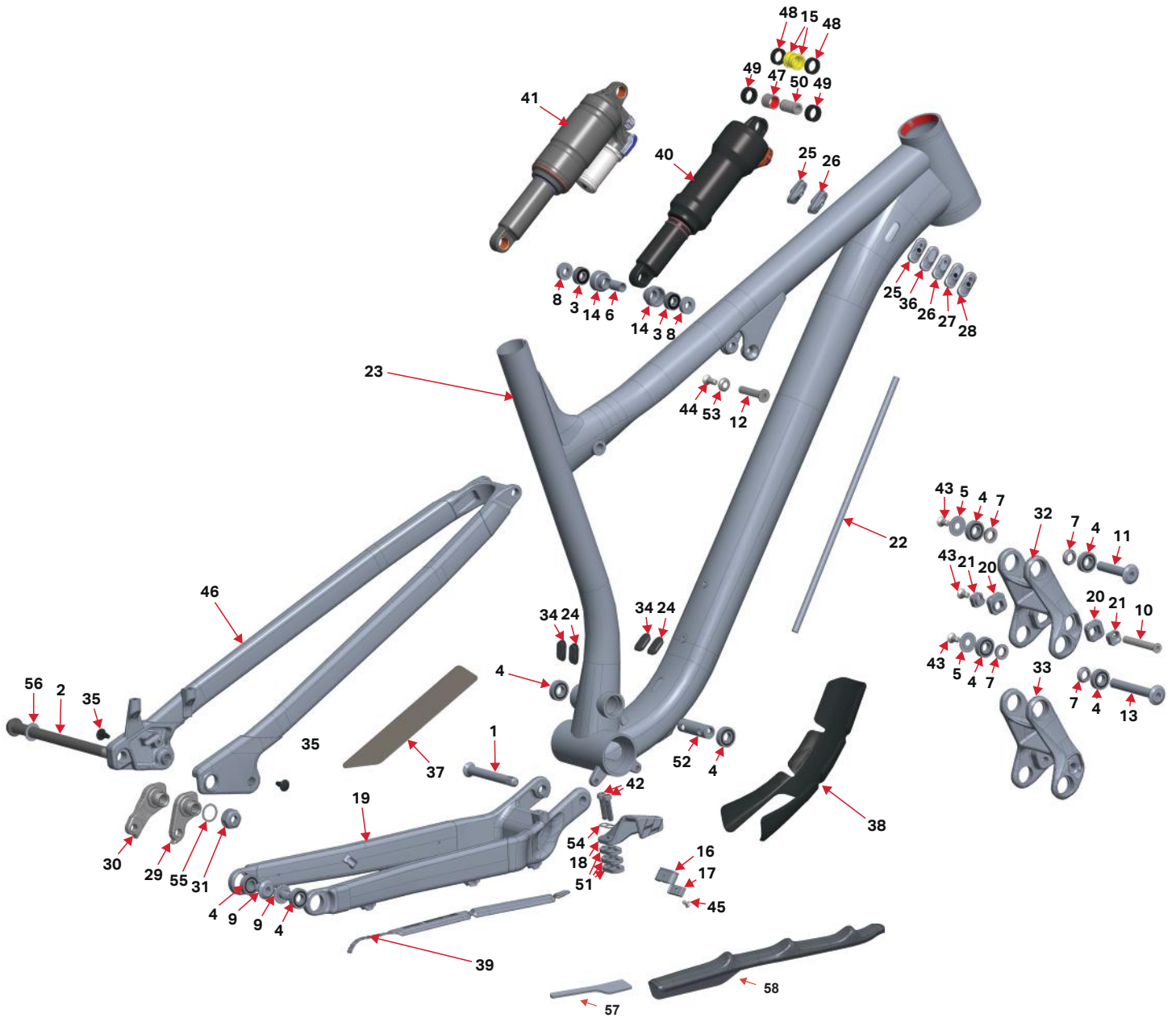


MY20 MY19 MY18

# Instinct Alloy



#	QTY	ITEM	PART NO.	REVISION	DESCRIPTION
			<b>1817011</b>	<b>Axle kit</b>	
2	1	AXLE, REAR	3227009	C	REAR AXLE 12X 173MM, HARD BLACK ANO
56	1	WASHER	3227006	B	WASHER, 12x19x0.5MM, 304 SS
			<b>1819015</b>	<b>INSTINCT LINK WITH BEARING KIT</b>	
32	1	LINK	1098101	A	INSTINCT LINK, 88MM LONG, RIDE9, AL7075-T6, HARD BLACK ANO
4	4	BEARING	1807042	NIL	ENDURO BEARING 6900 2RS MAX TYPE, 22X10X6 SIZE
			<b>1819016</b>	<b>INSTINCT BC LINK WITH BEARING KIT</b>	
33	1	LINK	1098102	A	INSTINCT BC LINK, 88MM LONG, AL7075-T6, HARD BLACK ANO
4	4	BEARING	1807042	NIL	ENDURO BEARING 6900 2RS MAX TYPE, 22X10X6 SIZE
			<b>1818012</b>	<b>HANGER KIT SHIMANO DIRECT MOUNT</b>	
30	1	HANGER	1099041	NIL	REAR DER. HANGER, EXT THREAD, SHIMANO DIRECT MOUNT
31	1	HANGER NUT	1099033	NIL	HANGER NUT, M16X1, 8MM HEX
55	1	WASHER	1808029	NIL	WASHER, 16x20x0.5MM, 304 SS
			<b>1818013</b>	<b>KIT STANDARD HANGER</b>	
29	1	HANGER	1099031	A	REAR DER. HANGER, EXT THREAD, STD MOUNT
31	1	HANGER NUT	1099033	NIL	HANGER NUT, M16X1, 8MM HEX
55	1	WASHER	1808029	NIL	WASHER, 16x20x0.5MM, 304 SS
			<b>1810005</b>	<b>PIVOT BOLT KIT</b>	
1	1	AXLE, MP	1807029	A	MP AXLE, M10X1.25, L:84Mm, AL7075-T6 HARD BLACK ANO
5	2	BEARING CAP	1807043	NIL	6900 BEARING CAP, AL 7075 T-6, HARD BLACK ANO
7	4	BEARING SPACER	1807044	NIL	6900 BEARING SPACER
9	2	BOLT	1807046	NIL	BOLT, 10MM X 15MM, M10X1 EXT., AL 7075 T-6 HARD BLACK ANO
10	1	BOLT	1807049	C	CSUNK BOLT, 8MM X 57MM X M6 INT.
11	1	BOLT	1807060	NIL	BOLT, 10MM X 54MM, M6X1 INT., AL 7075-T6, HARD BLACK ANO
13	1	BOLT, M10X78	1807061	NIL	BOLT, 10MM X 78MM, M6X1 INT., AL 7075 T-6, HARD BLACK ANO
43	3	SCREW M6x12	180566-012	NIL	FLAT HEAD C'SUNK SOCKET SCREW, M6-1.0 X 12mm, A4/316 SS, S5060.060.012
53	1	WASHER	1807064	NIL	C'SUNK WASHER: (for M6 screw) ID:6 x OD:14.6 x 3.25mm THK.
44	1	SCREW M6x16	180566-016	NIL	FLAT HEAD C'SUNK SOCKET SCREW, M6-1.0 X 16mm, A4/316 STAINLESS STEEL
12	1	BOLT SHK.	1807062	G	SHOCK BOLT, SOLID, OD:8MM, L: 41MM
52	1	SPACER, MP	1807038	B	MAIN PIVOT CENTER SPACER, ID:10, L:48
			<b>1817017</b>	<b>BEARING KIT</b>	
4	8	BEARING	1807042	NIL	ENDURO BEARING 6900 2RS MAX TYPE, 22X10X6 SIZE
			<b>3708023</b>	<b>BIKE PROTECTION KIT A</b>	
37	1	PROTECTOR	3708008	D	SEATSTAY PROTECTOR
38	1	PROTECTOR	3708022	NIL	MULTIBIKE DOWNTUBE PROTECTOR
39	1	PROTECTOR	3708035	NIL	MULTIBIKE CHAINSTAY PROTECTOR
			<b>1818003</b>	<b>SHOCK BEARING EYELET KIT</b>	
3	2	BEARING	1807036	NIL	ENDURO 698 LLU MAX 19X8X6
6	1	BEARING SLEEVE	1807028	A	BEARING EYELET SLEEVE FOR SR 19X8X6 CUP
8	2	BEARING SPACER	1807099	C	EYELET BEARING SPACER, 5.3MM THK, FOR 40MM LINK WIDTH
14	2	BRG CUP	1807026	E	BEARING EYELET FOR SR 19X8X6 BRG
			<b>1810009</b>	<b>RIDE 9 FLIP CHIP KIT</b>	
20	2	FLIP CHIP	1807003	NIL	FLIP CHIP, OUTSIDE, AL7075, BLACK ANODIZE.
21	2	FLIP CHIP	1807004	A	FLIP CHIP, INSIDE, AL7075, BLACK ANODIZE.
			<b>1398002</b>	<b>SPIRIT GUIDE KIT</b>	
18	1	CHAIN GUIDE	3398001	A	CHAIN GUIDE
42	2	SCREW	1807132	NIL	M6-1.0, 25MM LONG, SOCKET HEAD
54	1	WASHER	1807133	NIL	CHAIN GUIDE WASHER
51	3	SPACER	3398002	A	CHAIN GUIDE SPACER
			<b>1818014</b>	<b>GROMMET KIT FOR ALLOY FRAME</b>	
25	2	GROMMET	1809004	NIL	RUBBER GROMMET FOR 2 CABLES, 5mm,4mm YF-W13-2
26	2	GROMMET	1809005	NIL	RUBBER GROMMET FOR 1 CABLE 4mm YF-W13-4
27	1	GROMMET	1809006	NIL	RUBBER GROMMET FOR 1 CABLE 5mm YF-W13-5
28	1	GROMMET	1809007	NIL	RUBBER GROMMET FOR 2 CABLES, 5mm, 5mm YF-W13-8
36	1	PLUG	1809008	NIL	RUBBER PLUG YF-W13-7
34	2	PLUG	1807077	NIL	34.9MM SEAT TUBE PLUG
24	2	GROMMET	1807078	NIL	34.9MM SEAT TUBE DROPPER GROMMET
			<b>1818006</b>	<b>Alloy seat stay Cap Kit for alloy frames only</b>	
35	2	PLUG	1808034	NIL	PLASTIC PLUG FOR M5 THREAD, 12MM BUTTON HEAD, BLACK PLASTIC
			<b>1819014</b>	<b>DOWNTUBE CABLE CLAMP KIT</b>	
16	1	CABLE PORT	1807066	A	CABLE PORT, 2-PIECE, BOTTOM HALF
17	1	CABLE PORT	1807067	A	CABLE PORT, 2-PIECE, TOP HALF
45	1	SCREW, M4X8	1807068	NIL	C'SUNK SOCKET SCREW, M4x8mm, zinc plated 10.9 steel

Sold as a kit only. Individual part not sold separately